

## PLASMA ESTERASE POLYMORPHISM: A FEASIBLE TOOL IN RESEARCH ON DISCUS FISH STOCKS

*Cristina Alcântara da Silva'  
Aylton Saturnino Teixeira'*

### ABSTRACT

Starch gel electrophoresis was applied to investigate a plasma esterase polymorphism at the locus Est-4 in discus fishes *Symphysodon aequifasciatus* and *Symphysodon discus* which are very popular and expensive ornamental cichlids found in the Amazon Basin. Five presumptive genotypes: Est-4<sup>AA</sup>, Est-4<sup>AB</sup>, Est-4<sup>AC</sup>, Est-4<sup>BB</sup> and Est-4<sup>BC</sup> were observed in *S. aequifasciatus* and two: Est-4<sup>AB</sup> and Est-4<sup>AC</sup> in *S. discus* of six theoretically possible ones. The genotypes were supposedly encoded by three co-dominant alleles: Est-4<sup>A</sup>, Est-4<sup>B</sup> and Est-4<sup>C</sup> with allelic segregation following a Mendelian model. This polymorphism may contribute to researches towards the identification and delimitation of fish discus stocks in the Amazon region.

**Keywords:** Discus fish, electrophoresis, esterase, polymorphism.

### INTRODUCTION

The ornamental fishing trade in Amazon commercializes annually about 20 million of fishes generating US\$ 3 million (Chao, 2001; Silva *et al.*, 2008). As part of this trade, the discus fishes, genus *Symphysodon* Heckel, 1840 are popular and expensive ornamental cichlids restricted to areas where seasonal flooding occurs near the mainstream of the Amazon River itself and in the lower reaches of tributaries on the Amazonian floodplain (Kullander, 1996; Bleher *et*

*al.*, 2007). They are one of the most intriguing and distinctive groups of fishes among the South American Cichlidae (Ready *et al.*, 2006). The polemic on the taxonomic status of these fishes has persisted since the genus *Symphysodon* was first described by Heckel (1840) *apud* Koh *et al.* (1999). In fact, the validity of the species formally described in this genus has frequently been questioned (Mazeroll & Weiss, 1995; Koh *et al.*, 1999) until now. Nevertheless, most recently Ready *et al.* (2006) based on color patterns, morphology and mitochondrial DNA (mtDNA)

<sup>1</sup>Instituto Nacional de Pesquisas da Amazônia (INPA), Coordenação de Pesquisas em Biologia Aquática (CPBA), Avenida André Araújo 2936, 69060-001, Manaus, AM, Brazil. Corresponding author: A. S. Teixeira, e-mail: saturn@inpa.gov.br

analyses of *Symphysodon* specimens sampled along the length of the Solimões-Amazon River, provided evidence for the existence of a third species *Symphysodon tarzoo*. According to Ready *et al.* (*op. cit.*), the diagnostic phenotypic character of red spots on the anal fin and on the sides of the body distinguishes *S. tarzoo* from the other two *Symphysodon* species (*S. aequifasciatus* and *S. discus*) that have reticulations (Figure 1). Therefore, efforts should be done to find appropriate genetic markers in order to complement studies on the taxonomic complexity of these species.

Plasma proteins (albumin, transferrin, haemoglobin, and one or more esterases) are among the more rapidly evolving genetic markers (Sarich,

1977). Plasma esterases are relatively easy to detect and appear to be polymorphic in several vertebrate species, including fish (Diakov, 1998); reptiles (Flint *et al.*, 2000; Bock *et al.*, 2001); aves (Corbin *et al.*, 1974; Kuznetsov, *et al.*, 1998; Slavėnaitė & Sruoga, 2002); mammals (Bell *et al.*, 1998; Díaz *et al.*, 2002; Jiskrová *et al.*, 2002; Vinocur *et al.*, 2003; Erdođan & Özbeyaz, 2004; Nunes *et al.*, 2005; Đveistienė & Jatkuskienė, 2006), among others, and thus suitable in population genetic studies.

The aim of this study is to consider the potential application of plasma esterase polymorphism in detecting and delimiting natural stocks of discus fish.



## MATERIAL AND METHODS

Blood samples were drawn from twenty five live specimens of discus fish which were kindly donated by the ornamental fish exporters in Manaus, Amazon State, Brazil: Turkys Aquarium Ltda (10 *Symphysodon aequifasciatus* and 5 *S. discus*) and K2-Peixes Tropicais (10 *Symphysodon aequifasciatus*). Due to the minute amount of blood in discus fish, small needles of BD (0.55×20 - 24 G1/4) were used to collect about 1 ml of blood from each fish specimen. Blood was drawn from the dorsal veins and plasma specimens were separated by centrifugation, stored in a freezer, and later thawed moments before the electrophoresis experiments according to the method described by Teixeira *et al.* (2002).

Electrophoresis separation of discus fish plasma esterases was best resolved on Sigma starch gel at a concentration of 8.35%. All other electrophoretic procedures, related to the preparation of gel-electrode buffers and staining recipe to detect esterases by using á-naphthyl acetate as specific substract were those described by Ridgway *et al.* (1970). Plasma specimens were absorbed in 8×5 mm rectangular filter papers (Whatman 3 MM), and then inserted on the gels. A potential of 150 V for each gel slab was applied for a period of 4 h and 30 minutes with the electrophoretic migration taking place towards the anode. The putative co-dominant esterase alleles were classified alphabetically according to their decreasing electrophoretic mobilities (Figure 2).

## RESULTS AND DISCUSSION

The esterase enzyme extracted from the blood plasma of discus fish *Symphysodon aequifasciatus* and *Symphysodon discus*, revealed a polymorphism at the locus Est-4, detected in a zone of eletrophoretic activity located in the intermediate region of the gel. Individual homozygote fish was identified as a single esterase

band, and individual heterozygote fish as double esterase bands (Figure 2). In *S. aequifasciatus* five genotypes: Est-4<sup>AA</sup>, Est-4<sup>AB</sup>, Est-4<sup>AC</sup>, Est-4<sup>BB</sup> and Est-4<sup>BC</sup>; in *S. discus* two: Est-4<sup>AB</sup> and Est-4<sup>AC</sup> of six theoretically possible ones, were detected presumably encoded by three co-dominant alleles: Est-4<sup>A</sup>, Est-4<sup>B</sup> and Est-4<sup>C</sup> segregating at the Est-4 locus following a Mendelian pattern (Figure 2, Table 1). This polymorphism differs from the esterase monomorphism described by Silva *et al.* (2008) in white skeletal muscles of these two species, in which three fixed loci: Est-1 and Est-2 (in the anodic region of the gel) and Est-3 (in the cathode region) were identified. On the other hand, the present report confirms what was predicted by the above authors who did not rule out an eventual existence of discus fish isoenzyme polymorphism in other gene loci to be analyzed in the future.

Despite the small population sample size of *Symphysodon aequifasciatus* examined (N = 20) and even conscious that in this case the application of Hardy-Weinberg equilibrium test can not lead to any conclusive result, the population sample of this species, when preliminarily submitted to this test, showed a good genetic balance for the Est-4 locus (Table 1). Due to the very small population sample size of *S. discus* (N = 5), the above test was not applied to this sample. Additional population samples of these two species should be analyzed in the future to test for genetic equilibrium at this locus.

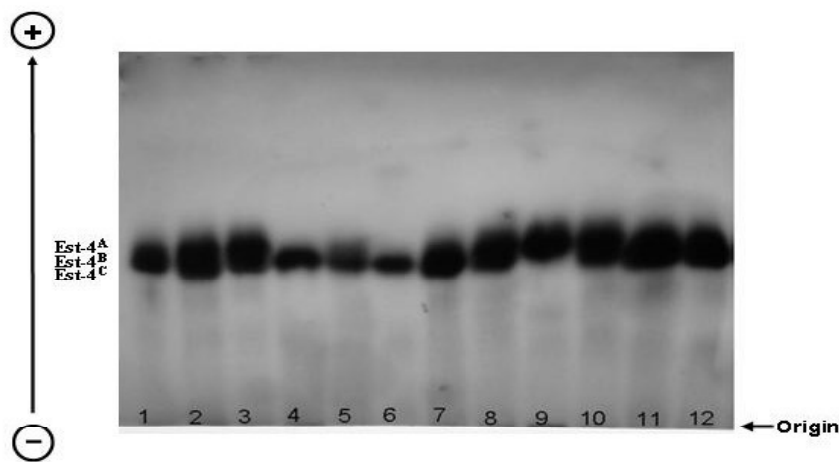
The polymorphic locus Est-4 detected in the blood plasma of the *Symphysodon aequifasciatus* and *S. discus* may be included in the list of isozyme markers to be used in future surveys on population genetics of discus fish.

**Acknowledgments:** The authors wish to thank the National Research Institute of Amazonia (INPA) for the financial support through the Institutional Project Programme (PRJ12.01); the Ministry of Science and Technology (MCT) through the Institutional Capacity

Programme at INPA for the research grant given to Cristina Alcântara da Silva; the ornamental fish exporters Turkys Aquarium Ltda and K2-Peixes Tropicais for donating discus fish specimens; and Miss Joanna Paiva Teixeira for revising the preliminary English version of the manuscript.

## REFERENCES

- Bell, K., D. Cooper, H. Arthur & W.E. Poole, 1998. Plasma Esterase (ES) Polymorphism in the Tammar Wallaby, *Macropus eugenii*. **Biochemical Genetics** 36(3):137-146.
- Bock, B.C., V.P. Páez & M.M. White, 2001. Genetic population structure of two threatened South American river turtle species, *Podocnemis expansa* and *Podocnemis unifilis*. **Chelonian Conservation and Biology** 4(1): 47-52.
- Bleher, H., K.N. Stölting, W. Salzburger & A. Meyer. 2007. Revision of the genus *Symphysodon* Heckel, 1840 (Teleostei: Perciformes: Cichlidae) based on molecular and morphological characters. **Aqua, International Journal of Ichthyology** 12(4): 133-174.
- Chao, N.L. 2001. The fishery, diversity, and conservation of ornamental fishes in the rio Negro Basin, Brazil, 161-204pp. *In: Conservation and management of ornamental fish resources of the Rio Negro Basin, Amazonia, Brazil - Project Piaba.* (Chao NL, Prang G, Sonneschein L & Tlustý M, Eds.) EDUA. Manaus-AM.
- Corbin, K.W., C.G. Sibley, A. Ferguson, A.C. Wilson, A.H. Brush & J.E. Ahlquist, 1974. Genetic polymorphism in New Guinea starlings of the genus *aplonis*. **The Condor** 76: 307-318.
- Diakov, Y.P. 1998. Population structure of the Pacific black halibut *Reinhardtius matsuurae* Jordan et Snyder. **Journal of Sea Research** 40: 109-116.
- Díaz, S., F.N. Dulout & P. Peral-García, 2002. Greater genetic variability in Argentine Creole than in Thoroughbred horses based on serum protein polymorphisms. **Genetics and Molecular Research** 1(3): 261-265.
- Erdoğan, M. & C. Özbeyaz, 2004. Investigation of Blood Protein Polymorphism and Estimation of Genetic Distances in Some Dog Breeds in Turkey. **Turkish Journal of Veterinary and Animal Sciences** 28: 583-590.
- Flint, N.S., F.H. Van der Bank & J.P. Grobler, 2000. A lack of genetic variation in commercially bred Nile crocodiles (*Crocodylus niloticus*) in the North-West Province of South Africa. **Water S.A.** 26(1): 105-110.
- Jiskrová, I., V. Glasnák & D. Misař, 2002. The use of blood protein polymorphism for determining the genetic distance between the Moravian warm-blooded horse and the Czech warm-blooded and Trakehner horses. **Czech Journal of Animal Science** 47(3): 98-105. Czech Journal of Animal Science
- Koh, T.L., G. Khoo, L.Q. Fan & V.P.E. Phang, 1999. Genetic diversity among wild forms and cultivated varieties of Discus (*Symphysodon* spp.) as revealed by Random Amplified Polymorphic DNA (RAPD) fingerprinting. **Aquaculture** 173: 485-497.
- Kullander, S.O., 1996. **Eine weitere übersicht der diskusfische, gattung *Symphysodon* Heckel. Diskus.** Datz Sonderheft.
- Kuznetsov, S.B., V.V. Baranyuk & J.Y. Takekawa, 1998. Genetic differentiation between wintering populations of Lesser Snow Geese nesting on Wrangel Island. **The Auk** 115(4): 1053-1057.
- Mazeroll, A. I. & M. Weiss. 1995. The state of confusion in discus taxonomy. *In: Cichlids Yearbook, vol. 5.* (Konings, A., Ed.). Alemanha: Cichlid Press, p.77-83.
- Nunes, R.L., D.A.A. Oliveira & E.G.A. Coelho, 2005. Polymorphism of serum proteins in Campolina horses. **Animal Reproduction** 2(1): 60-62.
- Ready, J.S., E.J.G. Ferreira & S.O. Kullander, 2006. Discus fishes: mitochondrial DNA evidence for a phylogeographic barrier in the Amazonian genus *Symphysodon* (Teleostei: Cichlidae). **Journal of Fish Biology (Supplement B)** 69: 200-211.
- Ridgway, G.J., S.W. Sherburne & R.D. Lewis, 1970. Polymorphism in the esterases of Atlantic herring. **Transactions of the American Fisheries Society** 99: 147-151.
- Sarich, V.M. 1977. Rates, sample sizes, and the neutrality hypothesis for electrophoresis in evolutionary studies. **Nature** 265: 24-28.
- Silva, C.A., R.C.A. Lima & A.S. Teixeira, 2008. Isoenzyme eletrophoretic patterns in discus fish (*Symphysodon aequifasciatus* Pellegrin, 1904 and *Symphysodon discus* Heckel, 1840) from the Central Amazon. **Genetics and Molecular Research** 7 (3): 791-805.
- Slavěnáitě, S. & A. Sruoga, 2002. Application of esterases as genetic markers for the differentiation of geese. **Veterinarija ir Zootechnika** 19(41): 99-101.
- Đveistienė, R. & V. Jatkauskienė, 2006. Genetic structure and variation of large-type Žemaitukai horse population. **Biologija** 4: 10-14.
- Teixeira, A.S., A. Jamieson & J.C.P. Raposo, 2002. Transferrin polymorphism in Central Amazon populations of pescada, *Plagioscion squamosissimus*. **Genetics and Molecular Research** 1(3): 216-226.
- Vinocur, M.E., K.E. Brass, M.I. Rubin & C.A.M. Silva, 2003. Genetic variability in the Brazilian criollo horse breed. **Ciência Rural** 33(1): 137-142.



**Figure 2.** Zymogram of plasma esterase genotypes in discus fish showing the polymorphism at the locus Est-4. The sample genotypes are: in *Symphysodon aequifasciatus*, lane 1 (Est-4<sup>AB</sup>), lanes 4 to 6 (Est-4<sup>BB</sup>), lane 7 (Est-4<sup>BC</sup>), lanes 8 and 10 (Est-4<sup>AC</sup>), and lane 9 (Est-4<sup>AA</sup>); in *Symphysodon discus*, lanes 2 and 3 (Est-4<sup>AC</sup>), lanes 11 and 12 (Est-4<sup>AB</sup>).

**Table 1.** Genotype and allele frequency distributions at the esterase locus Est-4 detected in the blood plasma of discus fish *Symphysodon aequifasciatus* and *S. discus*. Chi-square ( $\chi^2$ ) test assuming Hardy-Weimberg equilibrium was applied to test for genetic balance in *Symphysodon aequifasciatus* population sample. Expected numbers of genotypes are shown in parentheses.

	<i>Symphysodon aequifasciatus</i> N = 20*	<i>Symphysodon discus</i> N = 5
<b>Plasma esterase genotypes</b>		
Est- 4 <sup>AA</sup>	2 (1.25)	0
Est- 4 <sup>AB</sup>	2 (5.25)	3
Est- 4 <sup>AC</sup>	4 (2.25)	2
Est- 4 <sup>BB</sup>	7 (5.51)	0
Est- 4 <sup>BC</sup>	5 (4.72)	0
Est- 4 <sup>CC</sup>	0 (1.01)	0
<b>Plasma esterase allele frequencies</b>		
Est- 4 <sup>A</sup>	0.250	0.50
Est- 4 <sup>B</sup>	0.525	0.30
Est- 4 <sup>C</sup>	0.225	0.20
<b>Hardy- Weimberg test</b>		
df	3	-
$\chi^2$	5.252	-
p	0.20 - 0.10	-

\*Pooled samples of *Symphysodon aequifasciatus* donated by the ornamental fish exporters Turkys Aquarium Ltda and K-2 Peixes Tropicais.